

Parker 51

As played live by Stan Getz in 1951

Transcription : Pierre Lapprand

Find more on <https://www.pierrelapprand.fr>

♩ = 320

1. C Gm7 C7

5. Fmaj7 Fm7 Bb7(#11)

9. C D7

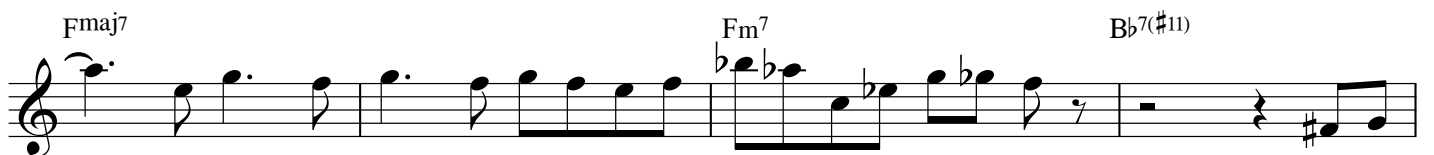
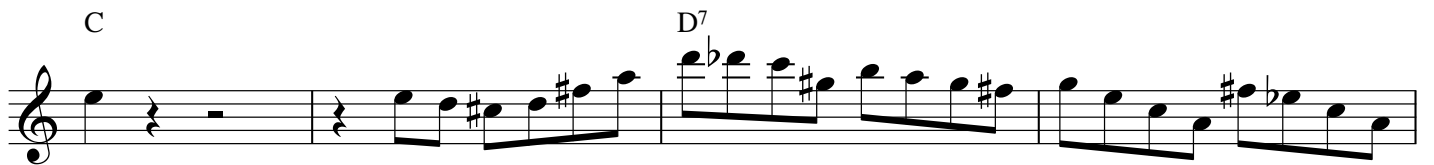
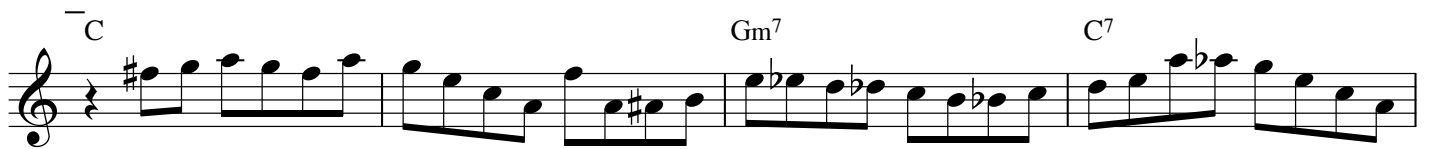
13. 1. Dm7 Em7(b5) A7 Dm7 G7

17. 2. Dm7 G7 C

21. Ebm7 Ab7 Dbmaj7

25. C#m7 F7 Bmaj7

29. Bm7 E7 Amaj7(#11)



Ebm7 Ab7 Dbmaj7

C#m7 F#7 Bmaj7

Bm7 E7 Amaj7(#11)

Am7 D7 Dm7 G7

C Gm7 C7

Fmaj7 Fm7 Bb7(#11)

C D7

Dm7 G7 C

C Gm7 C7

Fmaj7 Fm7 Bb7(#11)

C D7
 Dm7 Em7(b5) A7 Dm7 G7
 C Gm7 C7
 Fmaj7 Fm7 Bb7(#11)
 C D7
 Dm7 G7 C
 Ebm7 Ab7 Dbmaj7
 C#m7 F#7 Bmaj7
 Bm7 E7 Amaj7(#11)
 Am7 D7 Dm7 G7

This page of musical notation consists of ten staves of music. The first staff begins with a C chord and a melodic line. The second staff features a sequence of chords: Dm7, Em7(b5), A7, Dm7, and G7. The third staff starts with a C chord and includes Gm7 and C7. The fourth staff has Fmaj7, Fm7, and Bb7(#11). The fifth staff begins with a C chord and includes D7. The sixth staff has Dm7, G7, and C. The seventh staff features Ebm7, Ab7, and Dbmaj7, with triplets indicated by a '3' under the notes. The eighth staff has C#m7, F#7, and Bmaj7. The ninth staff includes Bm7, E7, and Amaj7(#11). The tenth staff has Am7, D7, Dm7, and G7.

C Gm7 C7



Fmaj7 Fm7 Bb7(#11)



C D7



Dm7 G7 C



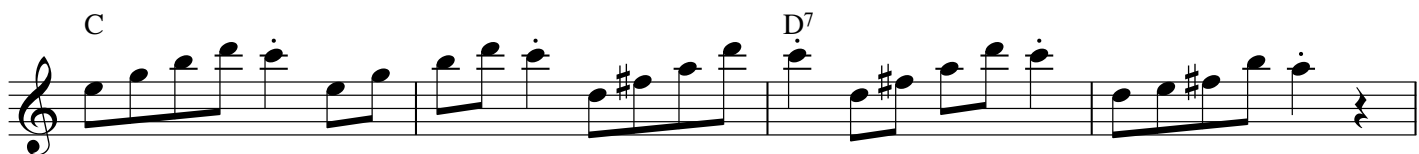
C Gm7 C7



Fmaj7 Fm7 Bb7(#11)



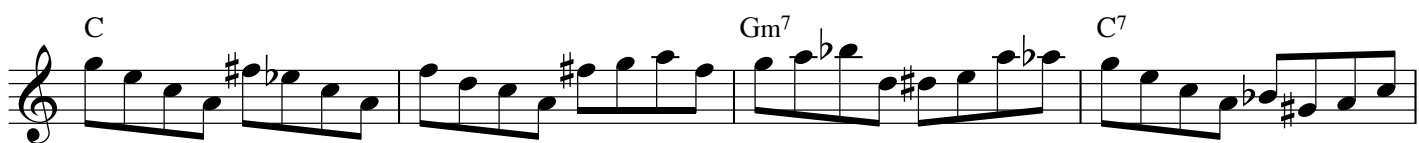
C D7



Dm7 Em7(b5) A7 Dm7 G7



C Gm7 C7



Fmaj7 Fm7 Bb7(#11)



